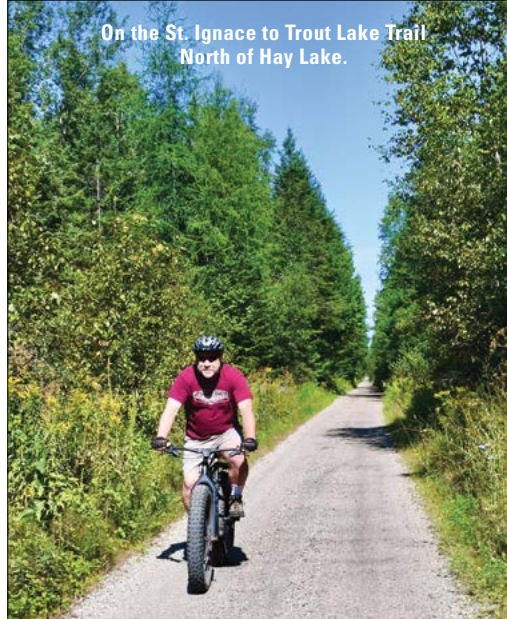
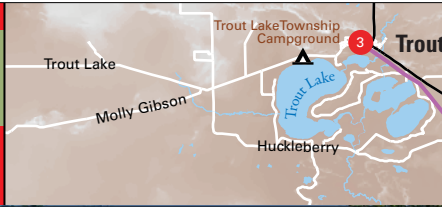
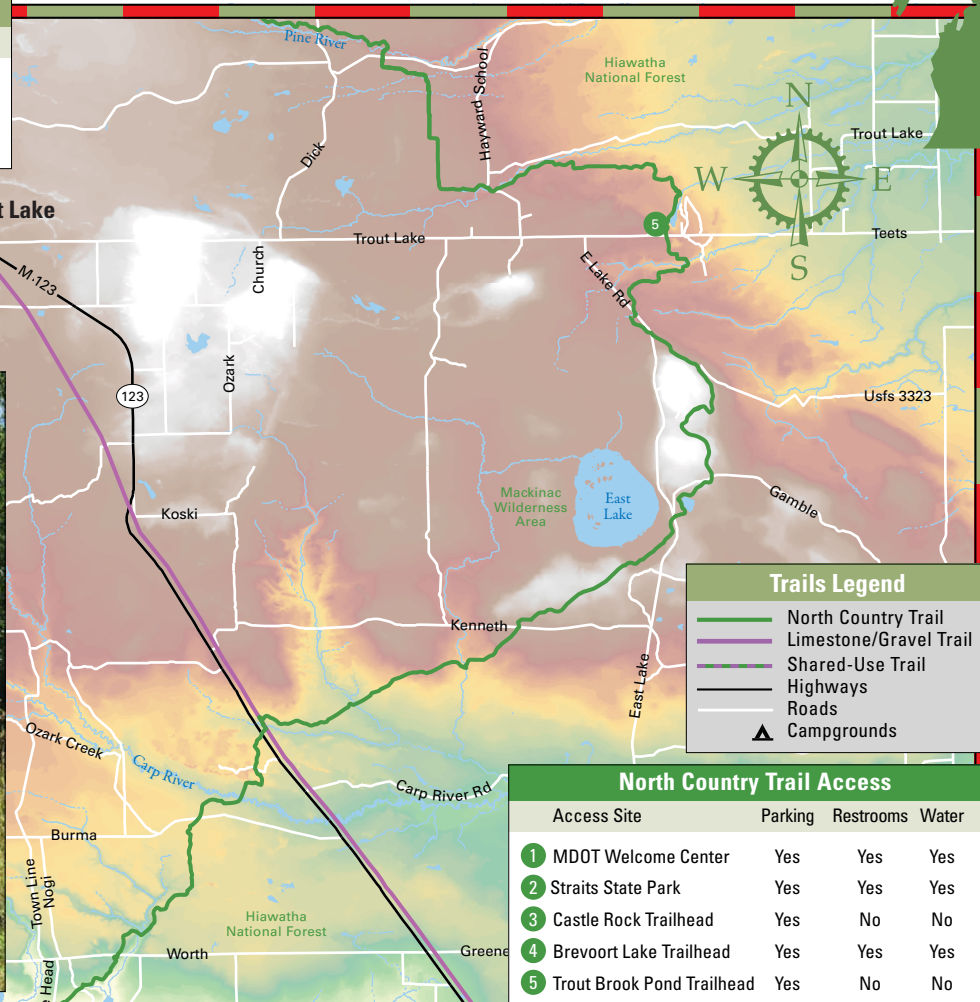


St. Ignace to Trout Lake Trail Access			
Access Site	Parking	Restrooms	Water
1 Little Bear East Arena	Yes	No	No
2 Downtown Moran Parking	Yes	No	No
3 Downtown Trout Lake Parking	Yes	No	No



On the St. Ignace to Trout Lake Trail North of Hay Lake.



Trails Legend	
—	North Country Trail
—	Limestone/Gravel Trail
- - -	Shared-Use Trail
—	Highways
—	Roads
▲	Campgrounds

North Country Trail Access			
Access Site	Parking	Restrooms	Water
1 MDOT Welcome Center	Yes	Yes	Yes
2 Straits State Park	Yes	Yes	Yes
3 Castle Rock Trailhead	Yes	No	No
4 Brevoort Lake Trailhead	Yes	Yes	Yes
5 Trout Brook Pond Trailhead	Yes	No	No

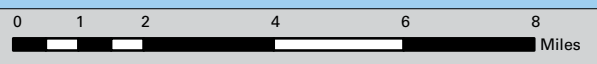
North Country Trail

The North Country Trail (NCT) stretches 4,600 miles from New York to North Dakota. The 47-mile section in Mackinac County is among the most scenic sections passing through Hiawatha National Forest and Mackinac Wilderness Area to a big bubbling spring at Trout Brook Pond. The NCT is nicely developed and maintained, and well marked.

This is a real wilderness adventure, so you'll need to plan accordingly. Make sure to pack a water filter and all the supplies you'll need. There are no stores, and only one source of potable water along the trail, but plenty of good sources for filtered water. Brevoort Lake is a great place to camp with nice restrooms and an artesian well. Primitive camping is allowed anywhere along the trail. For more info visit: www.NorthCountryTrail.org

St. Ignace to Trout Lake Trail

The 27-mile St. Ignace to Trout Lake Trail races along an abandoned stretch of the Duluth, South Shore & Atlantic Railroad through Hiawatha National Forest. Going north, the gravel and limestone trail gradually gains 574 feet in elevation as it passes by picturesque Hay Lake, several wetlands and the Carp River. This popular snowmobile and ORV trail is also used by mountainbikers and hikers during the summer and fall. It shares the first 5 miles north of St. Ignace with the North Country Trail. Although much of the trail follows the edge of M-123, it is separated by a thicket of fir, spruce and dense underbrush, so the scenery still seems wild and remote. You'll find plenty of lodging, shopping and dining in St. Ignace and convenience stores and eateries in the villages of Moran and Trout Lake.



©2023 Rockford Advertising. All rights reserved.